

# SBS Tanks®



**ASIB**



**SABS**  
ISO 45001  
**SABS**  
ISO 9001

[www.thesbsgroup.com](http://www.thesbsgroup.com)

South Africa & SADC

+27 31 7161820

USA

+1 (832) 702 7430

East Africa

+254 (0) 705 634 045

West Africa

+233 (0) 302 958 668



## COMPANY OVERVIEW

The SBS® Group is a leading provider of innovative water storage tanks and solar energy solutions. The company was established in South Africa over 25 years ago, in September 1998, and now has offices across Southern Africa, in East and West Africa and the USA and an extensive dealer and distributor network in other regions across the globe.

Water storage solutions from SBS Tanks have been engineered, designed, and developed to harness and secure resources anywhere in the world and are compliant with the highest internationally recognised quality and safety standards. In addition to ISO 9001:2015 and ISO 45001:2018 SBS is also accredited with various industry bodies relevant to the regions and sectors we serve including MS SIRIM, ISF, and ASIB.

SBS Energy supplies grid-tied and off-grid solar energy generation and backup power solutions to the commercial, industrial, and agricultural sectors in South Africa.

With a staff complement of over 150 people, SBS is focused on delivering effective, custom designed water tank and solar energy solutions to a wide range of sectors, employing professionals who have an in-depth understanding of the compliance requirements, international logistics and challenges faced.

SBS is proud to collaborate with global private investment partners, the Wellspring Climate Investment Group.

### WHY CHOOSE SBS®?

- Technologically advanced design:**  
Modular components allow for ease of transportation, quick installation and immediate commissioning in even the most remote locations, providing a cost-effective and low maintenance Water and liquid storage and solar energy generation solution.
- World-class production with international compliance:**  
ISO 9001:2015, ISO 45001:2018 and MS SIRIM
- Expert engineering and project management:**  
Our in-house engineering department, in collaboration with expert industry engineers, designs effective and certified solutions. With over two decades of experience, SBS project management, and installation teams streamline the delivery and installation process.
- Professional accreditation and affiliations:**  
SBS Tanks carry industry and regionally relevant certifications specific to the sectors we serve from fire to construction, steel and export logistics compliance, we deliver solutions that meet the needs of our clients and end-users.
- Long-term partnerships:**  
The relationships that we have built with clients, professional bodies and communities are as old as our business.
- Dedicated to employee development and transformation:**  
We aim to Work Smart, Commit Wholeheartedly and Build for Better in everything we do.



## SBS® TANKS OVERVIEW

Water is needed for every process in business. Access to clean water and sanitation for all has become a global priority. However, water scarcity is a global concern. Climate change, population growth, the rising costs of water and rapid urban expansion have resulted in increased demand for alternative water supply solutions. Sustainable and responsible water consumption, rainwater harvesting, and the recycling of water need to become global business and community priorities.

**SBS® Tanks** offers a comprehensive range of water security solutions proven to be effective and reliable for use in the **Mining, Fire Protection, Municipal, Water Conservation, Commercial** and **Agricultural** sectors. The SBS Tanks water storage solution range includes the **Standard, Cyclonic, Elevated Tank, Engineered Solution, Agricultural** and **Econo** ranges suitable for the storage of potable water, effluent, leachate, saltwater, and several other industrial liquids.

With over 25 years' experience, SBS® has become the preferred provider for sustainable water and liquid storage solutions across several sectors. We embrace innovation and as a result, we remain at the forefront of the water storage space, introducing and developing technologically advanced systems such as our Zinalume® steel panel water reservoirs and tanks, liquid storage liners, time- and cost-effective on-site build and cyclone and extreme weather resistant structures.

## PRODUCT FEATURES

The SBS® Tanks range offers capacities ranging from 7000 litres to 4.2 million litres. The modular nature of the tank allows for quick installation, no matter how remote the site, with no heavy equipment and minimal site preparation required. In addition to an expected lifespan of 60+ years, SBS® provides an industry standard 12-month workmanship and materials guarantee. Liquids are stored in a liner, preventing contact with the tank structure, and further reducing corrosion risk factors. A conditional 10-year No-Leak warranty is applicable provided that the tank is installed by an approved SBS® installation team.

SBS® Tanks have been developed in collaboration with skilled engineering professionals, adept at dealing with extreme weather and site access conditions. The Standard range has a wind rating of 43m/sec (154kph or 96mph) while the Cyclonic range is designed to withstand wind speeds of up to 67 meters per second (240kph or 150mph), rated for regions with a high incidence of meteorological hazards such as tropical storms, hurricanes, cyclones, typhoons, or other high-velocity wind events. Weight and thickness of roof sheets, trusses and body panels are adapted to the meet the specific climatic conditions on site to ensure a durable and robust reservoir body and water storage solution.

## APPLICATIONS

<b>Fire Protection</b>	- Fire sprinkler and hydrant water storage.
<b>Commercial</b>	- Emergency back-up water supply, wastewater collection, storage and processing and liquid and chemical storage.
<b>Mining</b>	- Water and liquid/chemical storage.
<b>Municipal</b>	- Bulk raw, seawater and potable water storage and effluent and wastewater treatment storage plants.
<b>Water Conservation</b>	- Rainwater harvesting and storage.
<b>Agricultural</b>	- Irrigation, aquaculture, process water and potable water storage

[www.thesbsgroup.com](http://www.thesbsgroup.com)

South Africa & SADC

+27 31 7161820

USA

+1 (832) 702 7430

East Africa

+254 (0) 705 634 045

West Africa

+233 (0) 302 958 668





## SBS® LIQUID STORAGE TANK DATA SHEET

<b>WALL STRUCTURE</b>	Zincalume® steel panels 0.8-4.8mm total gauge thickness conforming to SANS 9364 (1509364) and profiled to SBS Tanks unique design.
<b>STEEL GRADE</b>	G300 Zincalume®.
<b>PROTECTIVE COATING</b>	Zincalume® (Zinc/Aluminium Alloy), AZ 150 heavy duty coating. Additional coatings available to meet varying environmental conditions and applications.
<b>ESTIMATED LIFE</b>	60+ Years under normal climate and operational conditions.
<b>LINER</b>	Multi-layer woven PVC liner. Tested to AS/NZS 4020-2005: Testing of products for the use in contact with drinking water. Storage of various other liquids - contact SBS® for further details.
<b>BOLT SPECIFICATIONS</b>	Proprietary SBS® bolt design M10 & M12 with serrated flange head. Hot dipped galvanised to SANS 121:2011150 ISO 1461:2009. All bolts are high tensile 8.8 grade. Bolt test certifications available on request.
<b>DOMED ROOF</b>	Zincalume® steel corrugated sheets 0.47mm thick. G550 high tensile grade with AZ150 coating. All trusses are hot dipped galvanised after fabrication. Clear span self-supporting roof with no centre post.
<b>OUTLETS/INLETS</b>	All fittings/nozzles are manufactured from mild steel and hot dipped galvanised to SANS 121:2011150 ISO 1461:2009 after fabrication. Stainless steel and HDPE fittings are available on request.
<b>GUARANTEE</b>	SBS Tanks® carry an industry standard 12-month workmanship and materials guarantee and a 10-year non-leak warranty is applicable provided that the tank is installed by an approved SBS® installer.
<b>MANUFACTURING TIME</b>	Standard range, ex-stock, immediately available. Non stock items typically 3-8 weeks ex-factory, quantity and model dependant.
<b>DELIVERY TIME</b>	Typically 6-8 weeks ex-factory.
<b>INSTALLATION TIME</b>	Typically - 1 day ST05/02 20kl (on site work time) - 3 days ST18/02 250kl (on site work time) - 15 to 17 days ST31/09 3.3ML (on site work time).
<b>SITE PREPARATION</b>	Level site capable of supporting a 100kPa with sand bed or concrete ring beam as required. Site preparations to be arranged by client in accordance with engineers recommendations prior to installation of SBS Tanks®.

**SBS Tanks®  
Data Sheet**



[www.thesbsgroup.com](http://www.thesbsgroup.com)

South Africa & SADC

+27 31 7161820

USA

+1 (832) 702 7430

East Africa

+254 (0) 705 634 045

West Africa

+233 (0) 302 958 668



# Tanks®

- Capacity measured in kl(m³)
- Details for EC (Econo), ET (Elevated) and \* ES (Engineered Solutions) tanks available on request.



MODEL	DIAMETER (m)	NUMBER OF RINGS AND WALL HEIGHTS (m)									
		2	3	4	5	6	7	8	9	10	11
		2.14	3.17	4.20	5.24	6.28	7.31	8.34	9.39	10.41	11.45
ST04	2.73	12									
ST05	3.41	20	29	38	48	57					
ST06	4.09	28	42	55	68	82	96				
ST07	4.78	38	57	75	94	112	131				
ST08	5.46	50	74	98	123	147	171	196			
ST09	6.14	63	94	125	155	186	217	247			
ST10	6.82	78	116	154	192	230	267	305	343	380	418
ST11	7.51	94	140	186	232	278	324	369	416	461	507
ST12	8.19	112	167	221	276	331	385	440	495	549	603
ST13	8.87	132	196	260	324	388	452	516	580	644	708
ST14	9.55	153	227	301	376	450	524	598	673	746	820
ST15	10.24	176	261	346	431	516	602	687	773	858	943
ST16	10.92	200	297	394	491	588	685	781	879	974	1070
ST17	11.60	226	335	445	554	663	773	882	993		
ST18	12.28	253	376	498	621	744	866	989	1113		
ST19	12.97	282	419	555	692	829	965	1102	1240		
ST20	13.65	312	464	615	767	918	1070	1221	1374		
ST21	14.33	344	511	678	845	1012	1179	1346	1515		
ST22	15.01	378	561	744	928	1111	1294	1477	1662		
ST23	15.70	413	613	814	1014	1214	1415	1615	1817		
ST24	16.38	450	668	886	1104	1322	1540	1758	1978		
ST25	17.06	488	725	961	1198	1435	1671	1908	2147		
ST26	17.74	528	784	1040	1296	1552	1808	2064	2322		
ST27	18.43	569	845	1121	1397	1673	1949	2225	2504		
ST28	19.11	612	909	1206	1503	1800	2096	2393	2693		
ST29	19.79	657	975	1294	1612	1930	2249	2567	2889		
ST30	20.47	703	1044	1384	1725	2066	2407	2747	3091		
ST31	21.16	751	1114	1478	1842	2206	2570	2934	3301		
ST32	21.84	802	1189	1575	1965	2355	2741	3131	3521		
ST33	22.53	853	1264	1675	2089	2504	2915	3329	3744		
ST34	23.21	906	1342	1778	2218	2658	3094	3534	3974		
ST35	23.89	960	1422	1884	2350	2817	3279	3745	4212		

## SBS® Standard Tanks Range Gross Capacity Chart

• Please take note of the following:

These tanks will require additional site information, and geotechnical studies and will be subject to final pricing and design confirmation.

**S A B S**  
I S O 4 5 0 0 1  
**S A B S**  
I S O 9 0 0 1

[www.thesbsgroup.com](http://www.thesbsgroup.com)

South Africa & SADC

+27 31 7161820

USA

+1 (832) 702 7430

East Africa

+254 (0) 705 634 045

West Africa

+233 (0) 302 958 668





**APPLICATION: MUNICIPAL**  
**TANK MODEL: ST 28/08**  
**LOCATION: Eastern Cape, South Africa**



**APPLICATION: FIXED FIRE PROTECTION**  
**TANK MODEL: 2x ST 14/08**  
**LOCATION: Gauteng, South Africa**



**THE SBS GROUP, SBS HOLDINGS AND SBS TANKS RESERVE THE FOLLOWING RIGHTS ABSOLUTELY:**

The right to amend description of goods or services or the right to discontinue any product or service; The right to limit the sales of products or services or to limit quantities; The right to limit any warranty or guarantee on any product or service; The right to refuse any order or to cancel or limit any order in its entirety, without giving a reason therefor; The right to amend or alter, within reason, billing or delivery procedures.



**MARTIN &  
ASSOCIATES**

**CONSULTING ENGINEERS**

P.O. BOX 1342  
WESTVILLE 3630  
SOUTH AFRICA

Tel. No. +27 031 266 0755

15 WESTVILLE CENTRE  
52 NORFOLK TERRACE  
WESTVILLE 3629

E-MAIL : jwm@martinmw.co.za

Ref : 11488/j/23

4 February 2023

SBS Tanks (Pty) Ltd  
P O Box 20795  
DURBAN NORTH  
4016

Att. : Mr Delayne Gray

Dear Sir,

---

### **STRUCTURAL CERTIFICATION OF SBS TANK RANGE**

---

We confirm that SBS Tanks (Pty) Ltd have supplied to us all the relevant, current structural materials documentation for the sheet steel wall and domed roof tank range.

We have completed an independent structural design assessment for this range of tanks and certify that they are structurally stable and satisfactory subject to compliance with the materials documentation supplied to us by SBS Tanks, compliance with the stipulated foundation requirements and the design drawings/specifications issued by us to SBS Tanks.

This certification is based on compliance, where applicable, with the following South African National Standards :

- SANS 10160 – Basis of Structural Design & Actions for Buildings and Industrial Structures
- SANS 10162 – Structural Steelwork
- SANS 10162 Part 2 – Cold-formed Steel
- SANS 121 – Hot Dip Galvanized Coatings

Certification for installation of a tank other than in normal South African conditions is subject to additional and specific check design calculations for the individual location and conditions.

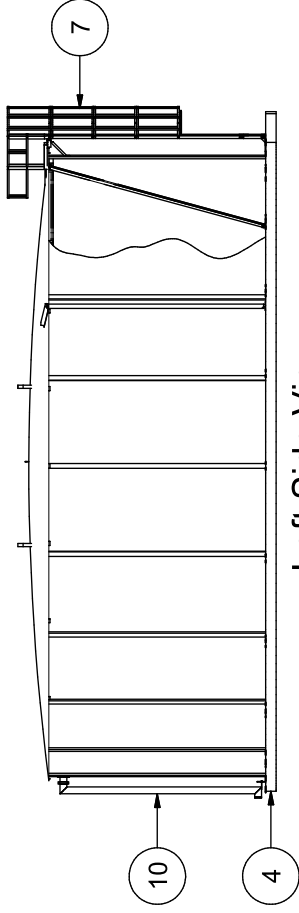
Yours faithfully  
J W MARTIN & ASSOCIATES

**J W MARTIN**  
Pr Eng 890451

Typical Tank Height = 2 - 9 m

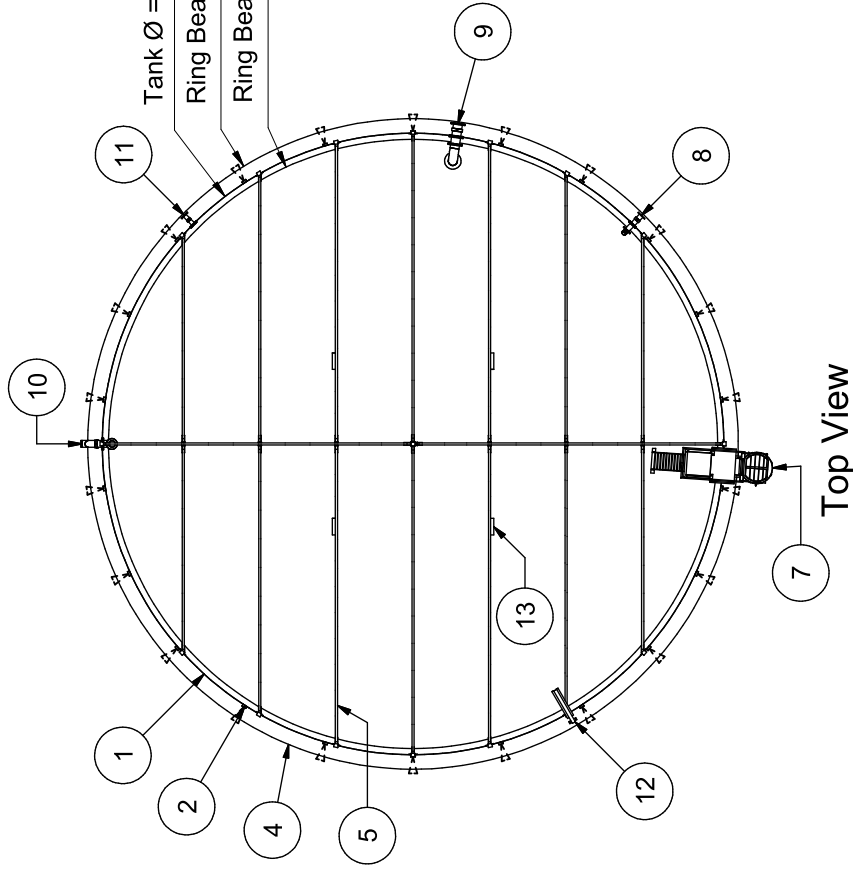
Front View

Not to scale




## Front View

## Left Side View



## Top View

PARTS LIST			
ITEM	QTY	PART NUMBER	DESCRIPTION
1	1	Tank Wall	Bluescope Zincalume G300 AZ150 Resin coated panels, bolted together using Gr 8.8 HDG SBS specific bolts.
2	-	Wind Girts/Uprights & Covers	Wind Girts are 2.4 mm HDG sheet metal, punched and bent into profile. Covers are Bluescope Zincalume G300 AZ 150 Resin coated panels.
3	1	Liner	SBS 700g potable propriety liner. Meets AS/NZS 4020-2005
4	1	Concrete Ring Beam	Reinforced, 25Mpa min
5	1	Truss Set	Fabricated from SHS (Min 300 MPa) and equal angle steel. HDG after fabrication
6	1	Dome Roof	Corrugated roof sheeting, 0.47 mm Zincalume AZ150 Coating
7	1	Tank Access	Fixed, c/w int & ext ladders, safety cage, platform, access hatch & hand rails
8	1	Inlet	Int Deflector, ext Flanged
9	1	Outlet	Int Anti-vortex, ext Flanged
10	1	Overflow	Int Bell Mouth, ext Downpipe
11	1	Dump Drain	ext Flanged
12	1	Water Level Indicator	Mechanical (True Read Type)
13	4	Ventilator	Static

5					<div><b>SBS Tanks®</b></div> <div>Water security brought to you by SBS® Holdings (Pty) Ltd</div> <div>Surprise Park, 12000 Park Road, 12000 Park Road, South Africa Tel: +27 (0)31 716 1820 Fax: +27 (0)31 716 1821 e-mail: info@sbs tanks.co.za www.sbstanks.co.za</div> <div><small>This information contained herein is property to SBS Water Systems (Pty) Ltd and is not to be copied, reproduced or used for any purpose other than that originally intended without prior written permission of SBS Water Systems (Pty) Ltd</small></div>
4					
3	BEW	2014/02/18			
2	BEW	2013/07/22	Updated	BMcP	
1	BEW	2013/02/04	Updated	BMcP	
Rev.	By	Date	Revisions	Approved	

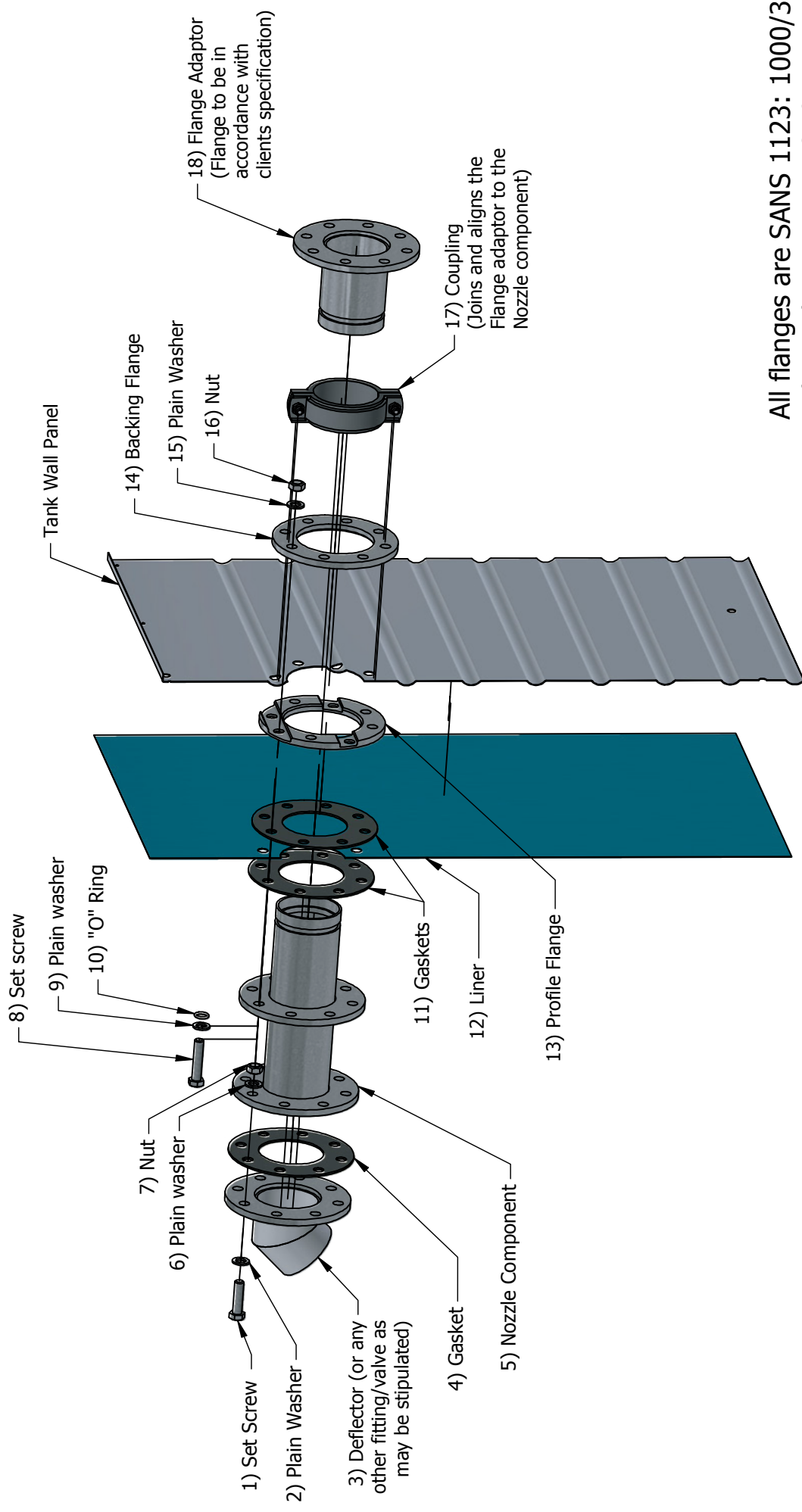
Drawn:	BEW
Date:	2013/01/21
Approved:	BMcP
Date:	2013/01/22

Dwg No:	General Arrangement - SBS Tank_R03	Rev:	03
Description:	Standard		
Title:		General Arrangement - SBS Tank	



## Inside Tank

## Outside Tank



All flanges are SANS 1123: 1000/3 unless otherwise specified

					 The SBS Group Surprise Park, 11 Surprise Rd, Maxmead, 3610, Kwa-Zulu Natal, South Africa Tel: +27 (0)31 716 1820 Fax: +27 (0)31 716 1821 e-mail: info@sbsgroup.co.za www.sbsgroup.com		Title: Typical Nozzle Installation	
5	YNS	09/02/2023	Drawing update	BEW	Drawn:	BEW		
4	SC	17/01/2023	Drawing update	BEW/KB	Date:	22/07/2013		
3	DMS	29/06/2015	Addition of updated logo	BMcP	Approved:	BMcP	Dwg No: Typical Nozzle Installation_R05	
2	BEW	16/07/2014	Liner representation added.	CRL			Rev: 05	
1	BEW	18/02/2014	Fasteners added	BMcP	Date:	18/02/2014	Description: Standard	
Rev.	By	Date	Revisions	Approved	Sheet: 1 / 1			



Concrete Ring Beam - Not to Scale

Internal lightly compacted sand bed (100 mm deep)

Detail B

NGL

Sectional Front View on A-A

Outer Diameter

Inner Diameter

Internal lightly compacted sand bed (100 mm deep)

25 MPa min

5 x Y-12 Rebars

Detail C

Plan View

Exposed view for drawing and clarity purposes only

Detail C

Approved for Construction

Sign

Date

Designation

Drawn:

BEW

Date:

22/04/2014

Approved:

BMcP

Date:

24/04/2014

Updated

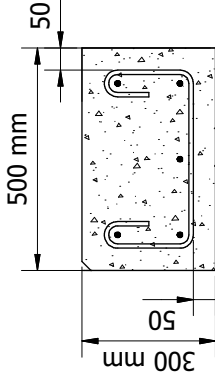
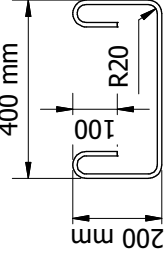
Revisions

Rev.

By

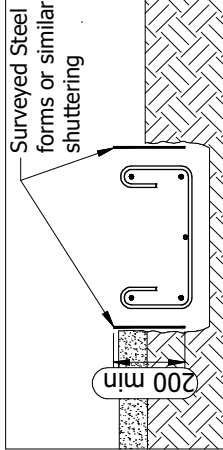
Date

R-10 Stirrup Dimensions  
(SANS 282: 2011, Shape code 72)

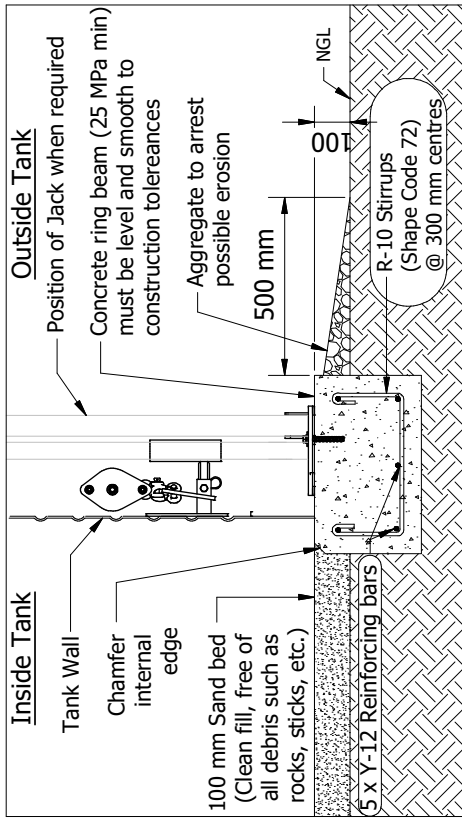


Detail B

Concrete Ring Beam Width & Depth



Formed Surfaces



Finished Ring Beam Detail



The IBYTanks Group  
11 Surprise Rd, Newstead, 3610, Kwa-Zulu Natal, South Africa  
Tel: +27 (0)31 716 1820 Fax: +27 (0)31 716 1821  
www.theibytanks.co.za

Title: Concrete Ring Beam, Reinforced - General

Dwg No:

Concrete\_Ring\_Beam-Reinforced-General\_R01

Rev:

01

Description:

Standard

Sheet:

2 / 2





**APPLICATION: MINING**  
**TANK MODEL: 2x ST 31/09**  
**LOCATION: Northern Cape, South Africa**



**APPLICATION: WATER CONSERVATION**  
**TANK MODEL: ST06/02**  
**LOCATION: On building rooftop, Cape Town, South Africa.**



**APPLICATION: COMMERCIAL**  
**TANK MODEL: ST26/05**  
**LOCATION: Texas, United States of America**



**APPLICATION: FIXED FIRE PROTECTION**  
**TANK MODEL: 2 X ST 15/06**  
**LOCATION: Kenya, East Africa**



[www.thesbsgroup.com](http://www.thesbsgroup.com)

**Support Office:** ☎ +27(0) 86 048 2657 | +27 31 7161820  
 Surprise Park, 11 Surprise Road, Maxmead, 3610  
 ✉ [info@sbstanks.co.za](mailto:info@sbstanks.co.za)

**Gauteng Office:** ☎ +27(0) 860 777 727 | +27(0)11 805 0850  
 Unit 5 North View, 726 Richards Drive, Halfway House, Midrand, 1685  
 ✉ [info@sbstanks.co.za](mailto:info@sbstanks.co.za)

**Western Cape Office:** ☎ +27 210 008 629 | +27 (0)71 420 5737  
 Unit E6 Quantum Park 2, 3 Quantum Road, Off Main Rd,  
 Firgrove, Cape Town, 7130 ✉ [info@sbstanks.co.za](mailto:info@sbstanks.co.za)

**West Africa:** ☎ +233 (0)302 958 668 | +233 (0)500 000 505  
 Plot No. 046 Appiah House, Satellite Hotel Street,  
 Community 9 Tema, Ghana  
 ✉ [info@sbstanks.com.gh](mailto:info@sbstanks.com.gh)

**East Africa:** ☎ +254 (0)705 634 045 | +254 (0)714 901918  
 Pili Trade Centre, Off Mombasa Road, Nairobi, Kenya  
 ✉ [info@sbstanks.co.ke](mailto:info@sbstanks.co.ke)

**USA:** ☎ +1 (832)702 7430 | +1 (866)922 5974  
 3519 Hickory Hill Lane, Montgomery, Texas TX 77356  
 ✉ [sales@sbstanksusa.com](mailto:sales@sbstanksusa.com)